

HIGH FREQUENCY INVERTER  
MOBILE C-ARM X-RAY FLUOROSCOPY & RADIOGRAPHY SYSTEM

# IMC-5060

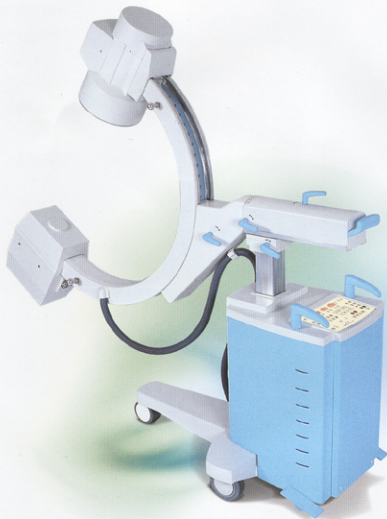


I-Medics Co.,Ltd.

# Diagnostic & Surgical Applications Mobile C-Arm X-Ray System

## IMC-5060

IMC-5060 is a vital system in fluoroscopy and diagnosing condition and size of diseased parts for operations. This system can effectively minimize radiation exposure dose by applying high frequency inverter system. It was also designed as a solid and compact system, thereby allowing easy maneuverability and effective operation even at small places. It is also equipped with a remote control system, allowing easy fluoroscopy and radiography of all affected parts with a few operators.



### ***This equipment provides excellent quality images***

- Highly sensitive 1/2" CCD Camera
- 9" / 3 field Image Intensifier, basically applied
- Highly sensitive and very bright Image Intensifier
- Top-Bottom, Left-Right reverse, and Rotation of images, basically applied
- Memory facilities of last image hold and 16 frame images, basically applied
- Noise Recursive Filter, basically applied
- Minimized noise with high frequency inverter

### ***This equipment applied high frequency inverter system, resulting in low radiation exposure dose***

- Radiography condition improved, resulting in reduced power
- Minimized radiation exposure dose on patients
- Excellent quality X-Ray generates with high frequency inverter rectifier
- High power X-Ray generates

### ***Easy to locate diagnostic parts***

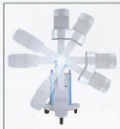
- Smooth C-ARM Frame operation and extensive cover of affected parts
- Highly precision system with computerized design
- Top-Bottom(40cm), Front-Rear(20cm), Left-Right( $\pm 12.5^\circ$ ), examination scope(79.7cm), horizontal axis rotation( $\pm 180^\circ$ )



Top-Bottom : 40cm



Front-Rear : 20cm



C-Arm Rotation :  $\pm 180^\circ$



C-Arm Frame Left-Right :  $\pm 12.5^\circ$

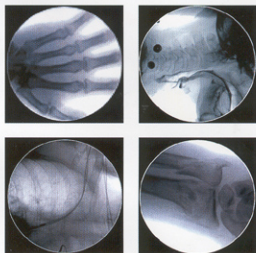


Slide Rotation :  $115^\circ$

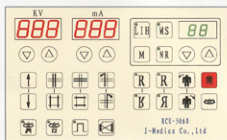
# IMC-5060 is a high frequency inverter type mobile C-Arm X-ray TV system for high quality diagnosis information



## Various Clinical Examples



## Remote Control Unit (Option)



Utility & Design application underway

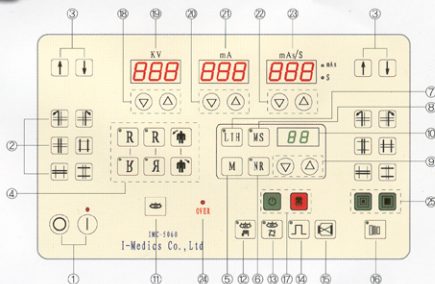
- ① Power switch
- ② Collimator control & rotation
- ③ C-Arm up-down control
- ④ Image reverse & rotation
- ⑤ Image memory
- ⑥ Image noise control

- ⑦ Last Image hold
- ⑧ Image memory number selection
- ⑨ Image memory & noise selection
- ⑩ Image memory & noise number indicator
- ⑪ Image fluoroscopy

- ⑫ X-Ray fluoroscopy manual mode
- ⑬ X-Ray fluoroscopy auto mode
- ⑭ X-Ray pulse mode
- ⑮ Image intensifier field mode
- ⑯ X-Ray radiography mode
- ⑰ X-Ray generation indicator

- ⑱ KV control
- ⑲ KV indicator
- ⑳ mA control
- ㉑ mA indicator
- ㉒ mAs control
- ㉓ mAs & Alarm indicator
- ㉔ X-Ray tube temperature overload indicator
- ㉕ Radiography large-small focus indicator

## Main Control Panel



- ① Power switch
- ② Collimator control & rotation
- ③ C-Arm up-down control
- ④ Image reverse & rotation
- ⑤ Image memory
- ⑥ Image noise control
- ⑦ Last Image hold
- ⑧ Image memory number selection
- ⑨ Image memory & noise selection
- ⑩ Image memory & noise number indicator
- ⑪ Image fluoroscopy
- ⑫ X-Ray fluoroscopy manual mode
- ⑬ X-Ray fluoroscopy auto mode
- ⑭ X-Ray pulse mode
- ⑮ Image intensifier field mode
- ⑯ X-Ray radiography mode
- ⑰ X-Ray generation indicator
- ⑱ KV control
- ⑲ KV indicator
- ⑳ mA control
- ㉑ mA indicator
- ㉒ mAs control
- ㉓ mAs & Alarm indicator
- ㉔ X-Ray tube temperature overload indicator
- ㉕ Radiography large-small focus indicator

# IMC-5060

HIGH FREQUENCY INVERTER  
MOBILE C-ARM X-RAY FLUOROSCOPY & RADIOGRAPHY SYSTEM

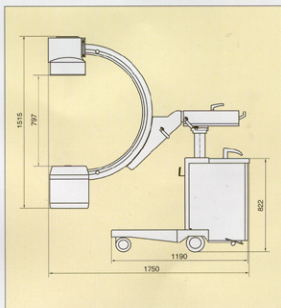


## Specifications

Division	Specification	Remarks
Power Input	Single phase, 220V, 50~60Hz	
X-Ray Output	Radiography: Max 110Kvp, 60mA Fluoroscopy: Max 110Kvp, 5mA	
X-Ray Generation Method	High frequency inverter	
KV Control	40~110Kvp	1KV step
Radiography mAs control	1~250mAs	25 step
Fluoroscopy mA control	0.3~5mA	1mA step
Alarm time	4minutes 30seconds~5minutes	
X-Ray tube	Large focal spot : 1.5mm Small focal spot : 0.5mm	
High voltage generator	Monotank Type	
Collimator control system	Radiography: 10x12" Film size, same Fluoroscopy: 1/1 size, same	
Cassette holder	10x12" Type	
Image Intensifier	9"/3 field, basically applied Central resolution : 48, 56, 66 Lp/cm	option : 6"
Camera	High Sensitive CCD Type	
Image memory	16 Frame, basically applied Last image hold, basically applied	
TV Monitor	12" B/W	option : 17"
Self test	Tube & System check	

※ Specifications, design and color are changeable without notification for improvement of quality and functions of this system.

## Dimension



**SR** Corporation Ltd.

#401, Shinnae Techno Town, 485 Sangbong-Dong, Jungrang-Ku,  
Seoul, Korea

TEL: 82-2-3423-0777

FAX: 82-2-3423-2555

E-MAIL: sr@srcorp.co.kr

http://www.srcorp.co.kr